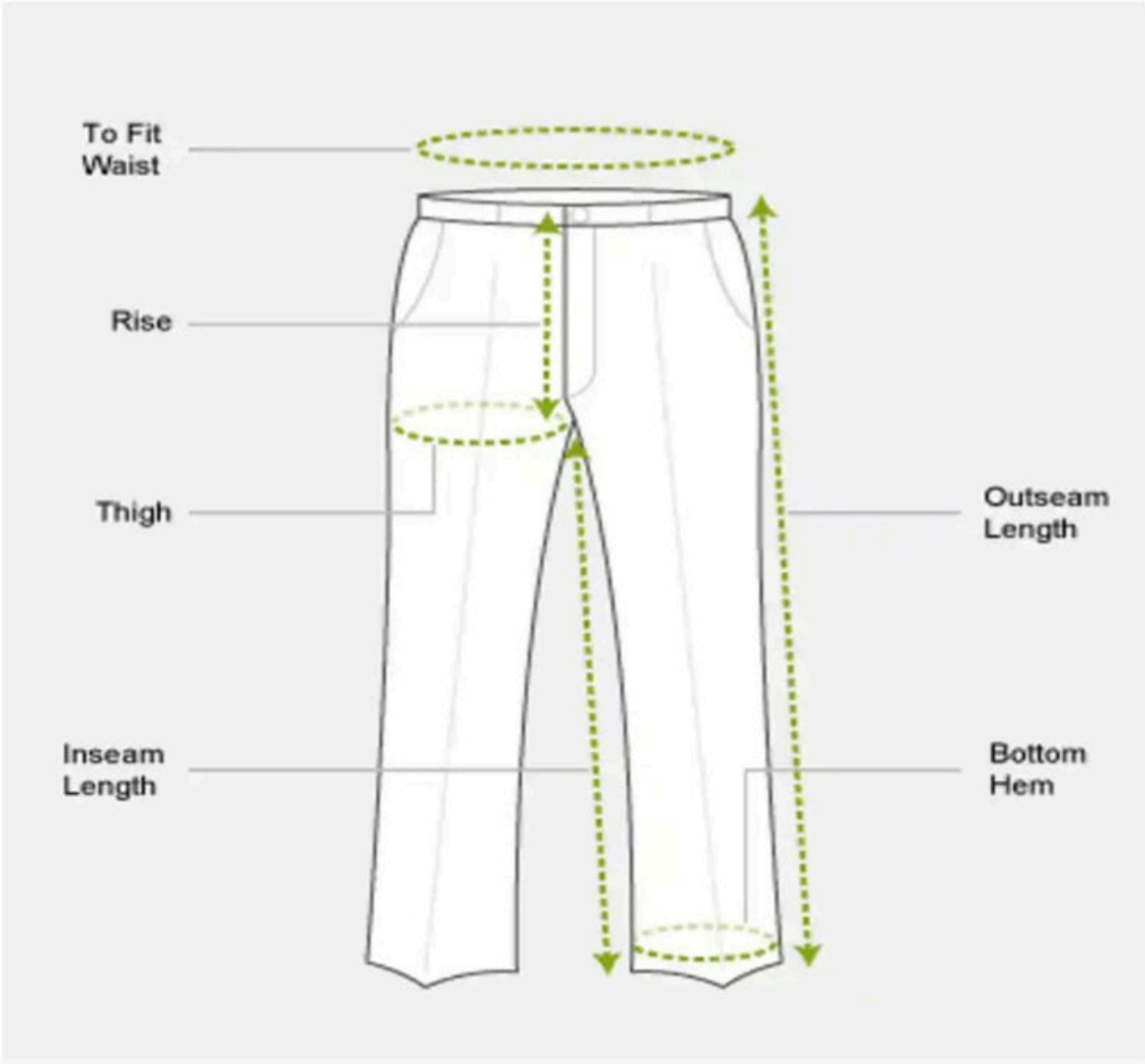
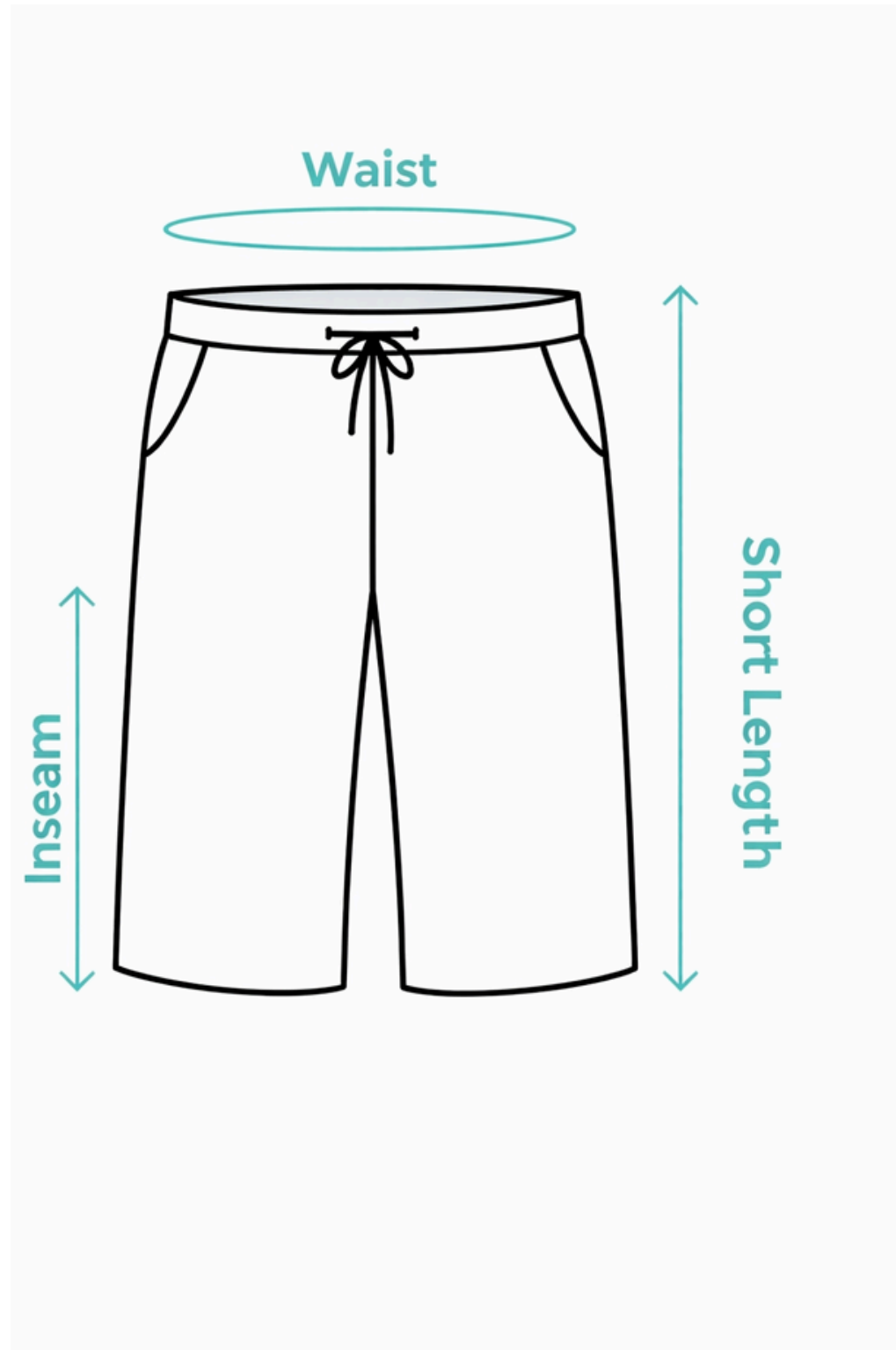


# BOYS PANT



Waist Size (in)	24	26	28	30	32	34	36	38
Pant Length / Outseam (in)	34	36	38	40	42	44	46	48
Inseam (in)	34	26	28	30	32	34	36	38

# BOYS SHORTS



Waist Size (in)	20	22	24	26
Shorts Length	20	21	22	23
Inseam (in)	8	9	10	11

# SHIRT (FULL SLEEVE) NURSERY - 5<sup>TH</sup>

## MEASUREMENT GUIDELINES

### FOR FULL SLEEVE SHIRT



#### TIPS

- Use a flexible measuring tape.
- Measure over light clothing.
- Stand straight and keep arms relaxed.



For best fit, compare your measurements with our size chart.

Chest Size (in)	20	22	24	26	28
Shirt Length (in)	18	19	20	21	22
Shoulder (in)	9	10	11	12	13
Sleeve Length (in)	16	17	18	19	20

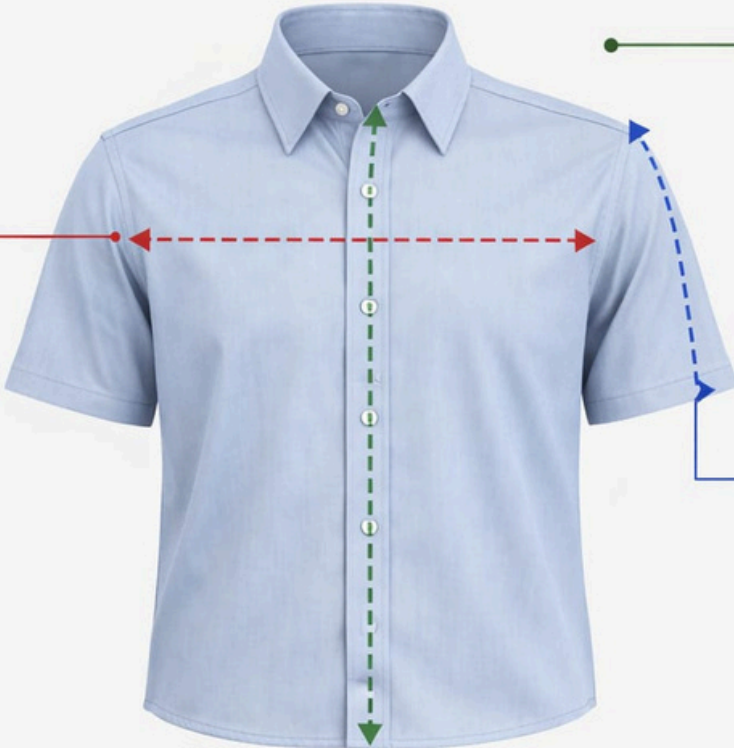
# SHIRT (HALF SLEEVE) NURSERY - 5<sup>TH</sup>

## MEASUREMENT GUIDELINES

### FOR HALF SLEEVE SHIRT

**1 CHEST SIZE**

Measure across the fullest part of the chest from one armpit to the other.



**2 SHIRT LENGTH**

Measure from the top of the shoulder (near the collar) down to the bottom of the shirt.

**3 SLEEVE LENGTH**

Measure from the shoulder seam to the end of the sleeve.

**TIPS**

- Use a flexible measuring tape.
- Measure over light clothing.
- Stand straight and keep arms relaxed.



For best fit, compare your measurements with our size chart.

Chest Size (in)	20	22	24	26	28
Shirt Length (in)	18	19	20	21	22
Shoulder (in)	9	10	11	12	13
Sleeve Length (in)	6	6.5	7	7.5	8

# SHIRT (FULL SLEEVE)

## 6<sup>TH</sup> - 12<sup>TH</sup>

### MEASUREMENT GUIDELINES

#### FOR FULL SLEEVE SHIRT



#### TIPS

- Use a flexible measuring tape.
- Measure over light clothing.
- Stand straight and keep arms relaxed.



For best fit, compare your measurements with our size chart.

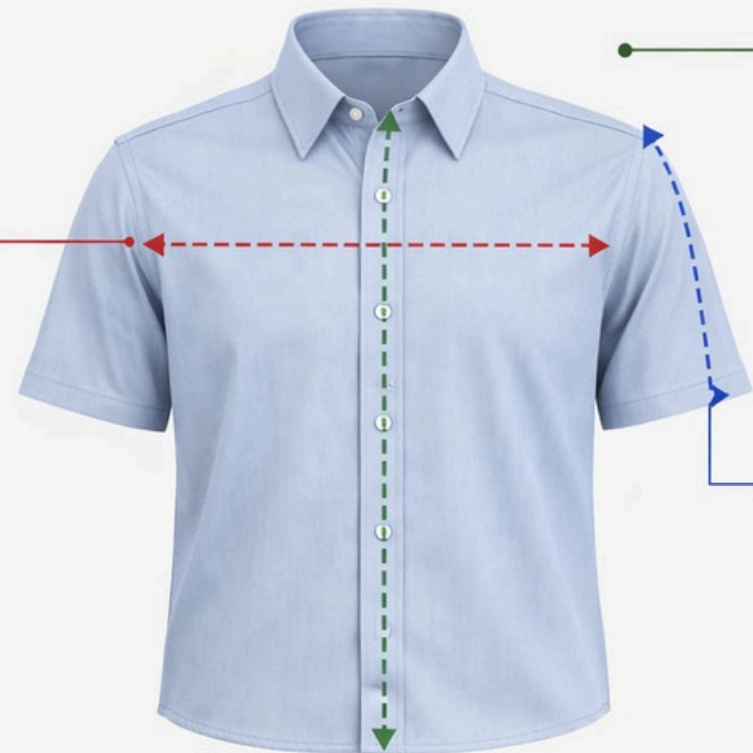
Chest Size (in)	28	30	32	34	36	38	40
Shirt Length (in)	22	23	24	25	26	27	28
Shoulder (in)	13	14	15	16	17	18	19
Sleeve Length (in)	20	21	22	23	24	25	26

# SHIRT(HALF SLEEVE)

6<sup>TH</sup> - 12<sup>TH</sup>

## MEASUREMENT GUIDELINES

### FOR HALF SLEEVE SHIRT



#### 1 CHEST SIZE

Measure across the fullest part of the chest from one armpit to the other.

#### 2 SHIRT LENGTH

Measure from the top of the shoulder (near the collar) down to the bottom of the shirt.

#### 3 SLEEVE LENGTH

Measure from the shoulder seam to the end of the sleeve.

#### TIPS

- Use a flexible measuring tape.
- Measure over light clothing.
- Stand straight and keep arms relaxed.



For best fit, compare your measurements with our size chart.

Chest Size (in)	28	30	32	34	36	38	40
Shirt Length (in)	22	23	24	25	26	27	28
Shoulder (in)	13	14	15	16	17	18	19
Sleeve Length (in)	8	8.5	9	9.5	10	10.5	11

# GIRLS SHIRT (HALF SLEEVE)

## MEASUREMENT GUIDELINES

### FOR GIRLS' HALF SLEEVE SHIRT

**1 CHEST SIZE**  
Measure across the fullest part of the chest from one armpit to the other.



**2 SHIRT LENGTH**

Measure from the top of the shoulder (near the collar) down to the bottom of the shirt.

**3 SLEEVE LENGTH**

Measure from the shoulder seam to the end of the sleeve.

**TIPS**

- Use a flexible measuring tape.
- Measure over light clothing.
- Stand straight and keep arms relaxed.



For best fit, compare your measurements with our size chart.

Chest Size (in)	20	22	24	26	28	30	32	34	36	38	40
Shirt Length (in)	17	18	19	20	21	22	23	24	25	26	27
Shoulder (in)	8.5	9.5	10.5	11.5	12.5	13.5	14.5	15.5	16.5	17.5	18.5
Sleeve Length (in)	5.5	6	6.5	7	7.5	8	8.5	9	9.5	10	10.5

# GIRLS SHIRT (FULL SLEEVE)

## MEASUREMENT GUIDELINES

### FOR GIRLS' FULL SLEEVE SHIRT

#### 1 CHEST SIZE

Measure across the fullest part of the chest from one armpit to the other.



#### 2 SHIRT LENGTH

Measure from the top of the shoulder (near the collar) down to the bottom of the shirt.

#### 3 SLEEVE LENGTH

Measure from the shoulder seam to the end of the sleeve.

#### TIPS

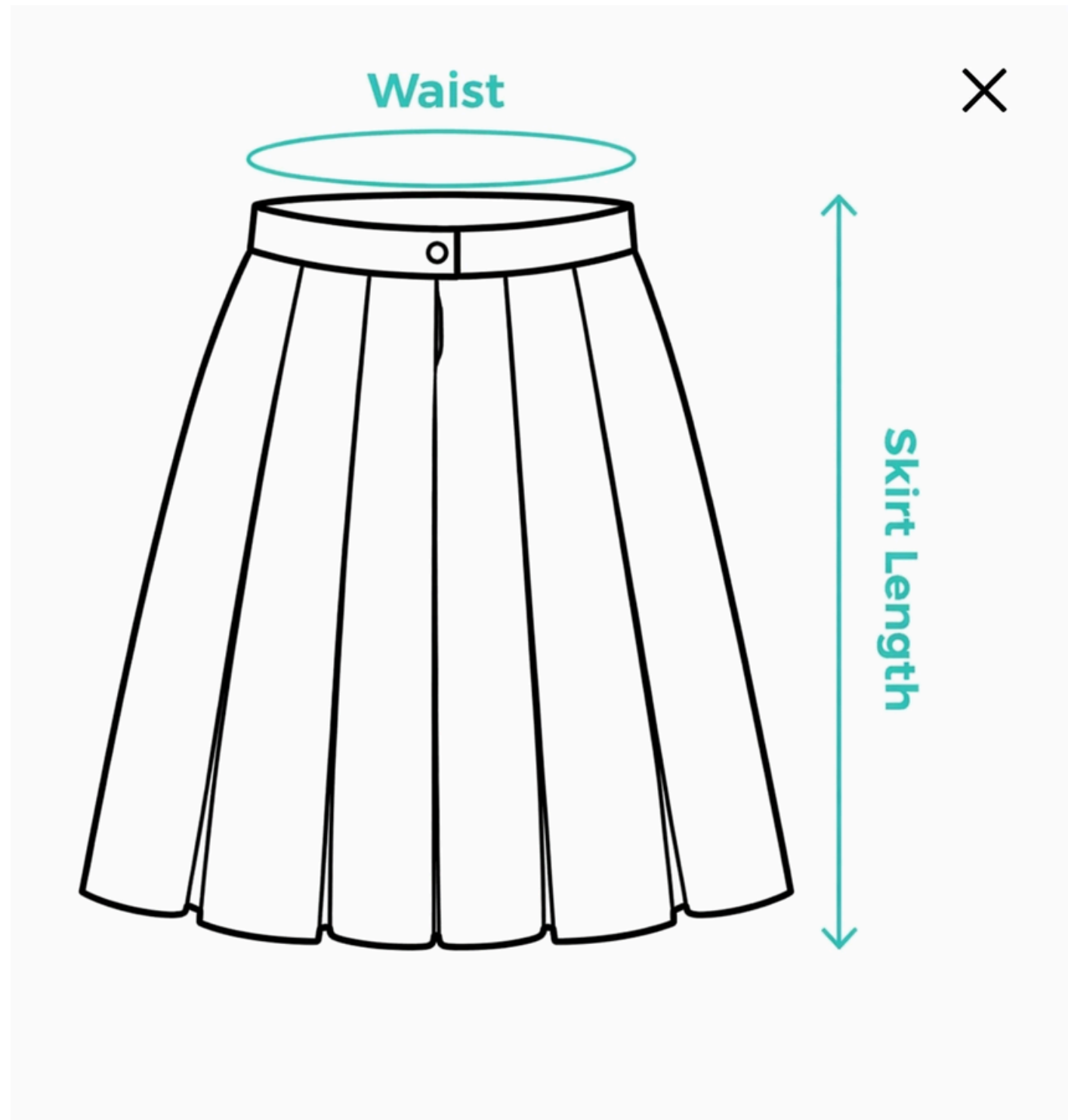
- Use a flexible measuring tape.
- Measure over light clothing.
- Stand straight and keep arms relaxed.



For best fit, compare your measurements with our size chart.

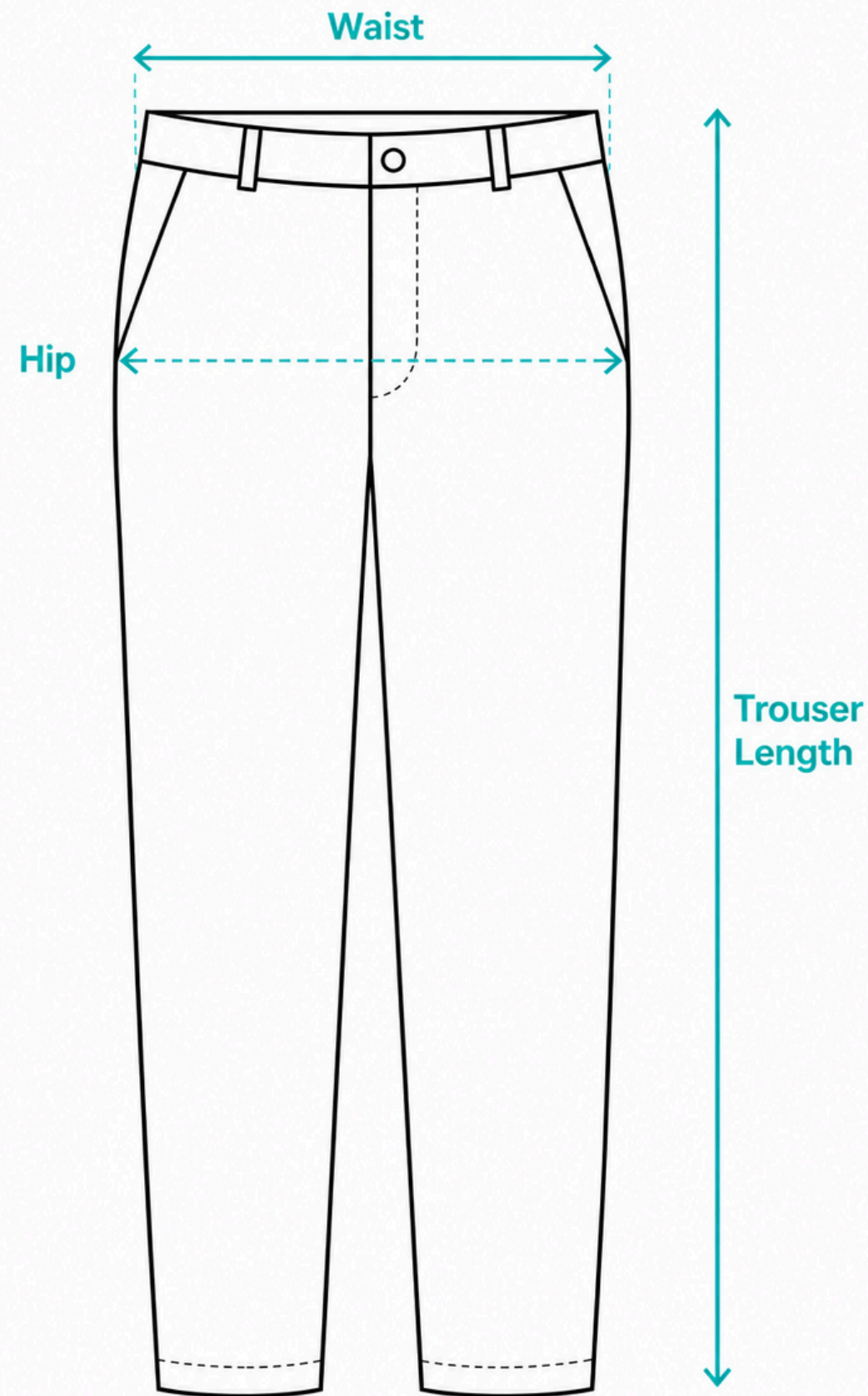
Chest Size (in)	20	22	24	26	28	30	32	34	36	38	40
Shirt Length (in)	17	18	19	20	21	22	23	24	25	26	27
Shoulder (in)	8.5	9.5	10.5	11.5	12.5	13.5	14.5	15.5	16.5	17.5	18.5
Sleeve Length (in)	15	16	17	18	19	20	21	22	23	24	25

# GIRLS SKIRT



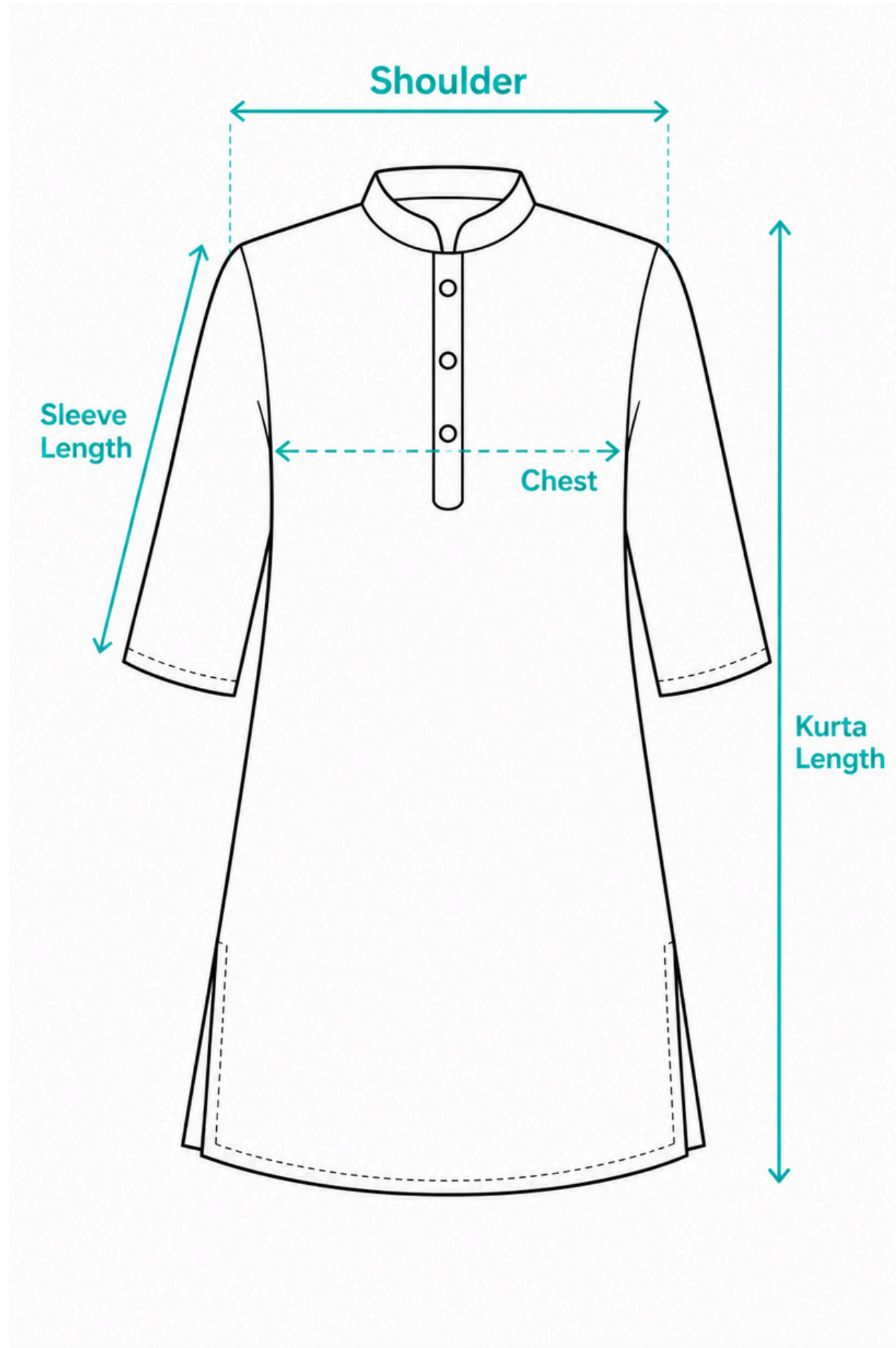
Waist Size (in)	20	22	24	26	28	30	32	34
Skirt Length (in)	14	15	16	17	18	19	20	21

# PENCIL TROUSER (9<sup>TH</sup> - 12<sup>TH</sup> )



WAIST (in)	26	28	30	32	34
HIP (in)	37	39	41	43	45
LENGTH (in)	38	39	40	41	42

# KURTA (9<sup>TH</sup> - 12<sup>TH</sup> )



Chest Size (in)	32	34	36	38	40
Kurta Length (in)	38	39	40	41	42
Shouler (in)	13.5	14	14.5	15	15.5
Sleeve Length (in)	15	15.5	16	16.5	17