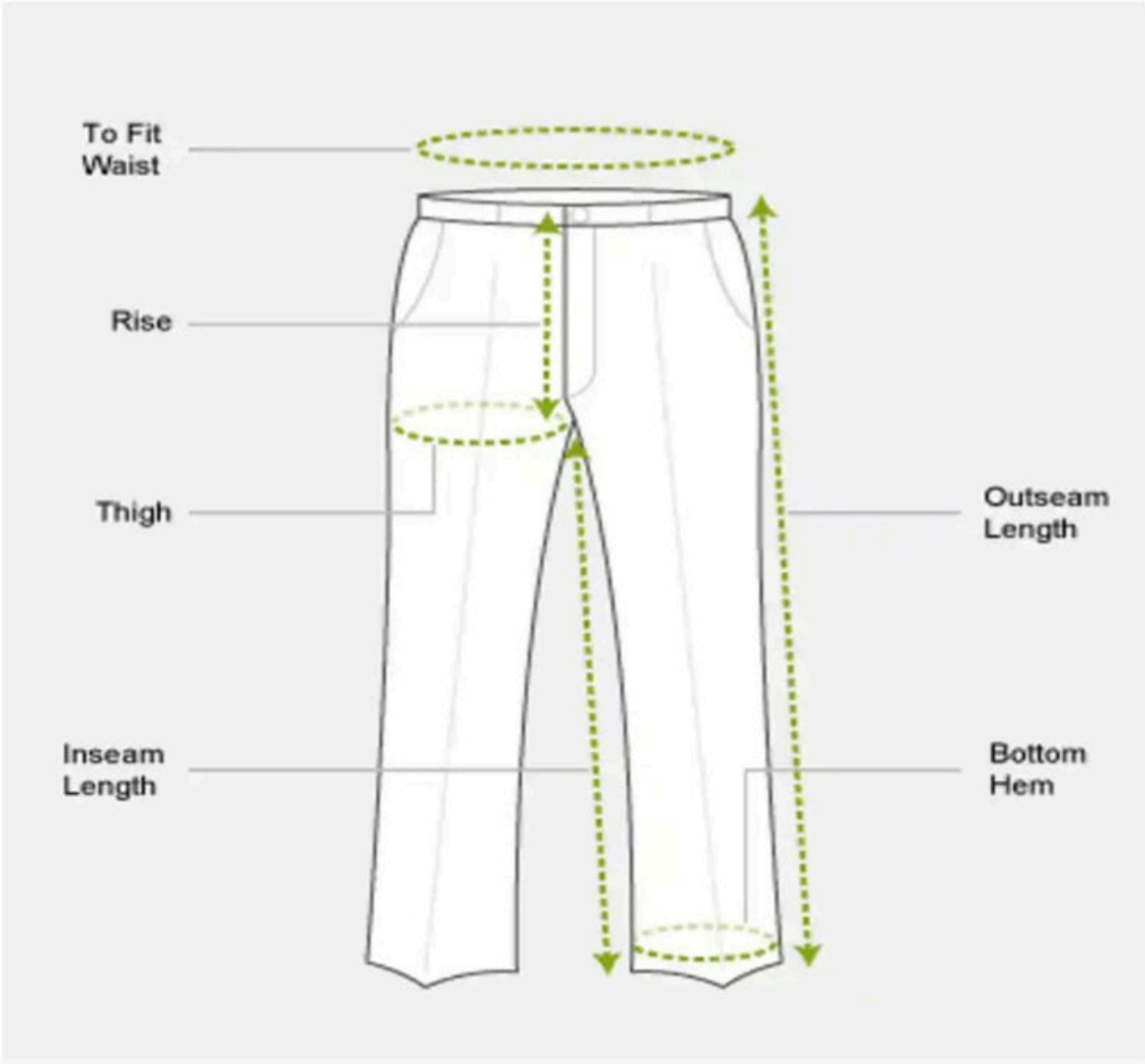
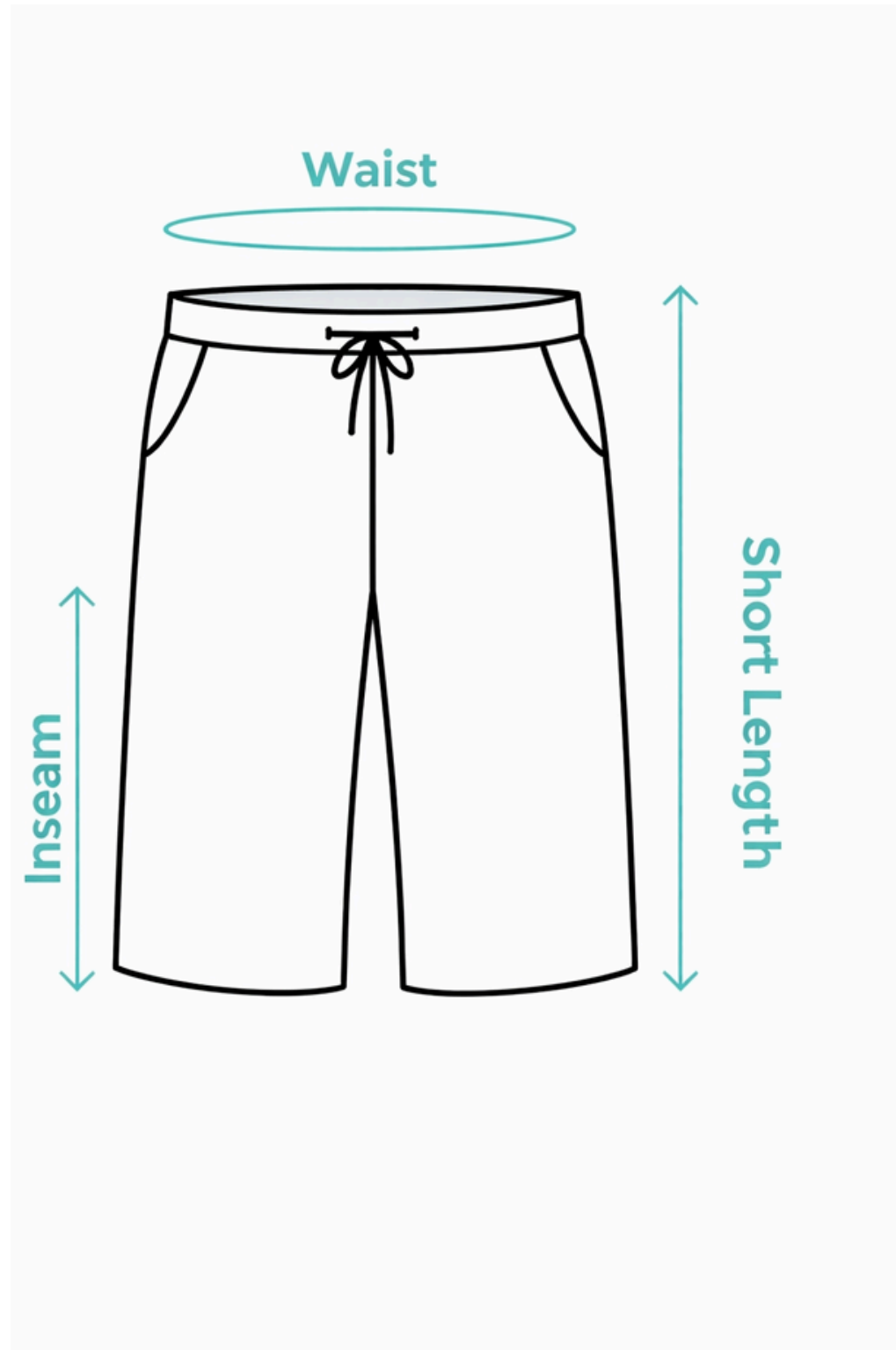


BOYS PANT



Waist Size (in)	24	26	28	30	32	34	36	38
Pant Length / Outseam (in)	34	36	38	40	42	44	46	48
Inseam (in)	34	26	28	30	32	34	36	38

BOYS SHORTS



Waist Size (in)	20	22	24	26
Shorts Length	20	21	22	23
Inseam (in)	8	9	10	11

SHIRT (FULL SLEEVE) NURSERY - 5TH

MEASUREMENT GUIDELINES

FOR FULL SLEEVE SHIRT



TIPS

- Use a flexible measuring tape.
- Measure over light clothing.
- Stand straight and keep arms relaxed.



For best fit, compare your measurements with our size chart.

Chest Size (in)	20	22	24	26	28
Shirt Length (in)	18	19	20	21	22
Shoulder (in)	9	10	11	12	13
Sleeve Length (in)	16	17	18	19	20

SHIRT (HALF SLEEVE) NURSERY - 5TH

MEASUREMENT GUIDELINES

FOR HALF SLEEVE SHIRT

1 CHEST SIZE

Measure across the fullest part of the chest from one armpit to the other.



2 SHIRT LENGTH

Measure from the top of the shoulder (near the collar) down to the bottom of the shirt.

3 SLEEVE LENGTH

Measure from the shoulder seam to the end of the sleeve.

TIPS

- Use a flexible measuring tape.
- Measure over light clothing.
- Stand straight and keep arms relaxed.



For best fit, compare your measurements with our size chart.

Chest Size (in)	20	22	24	26	28
Shirt Length (in)	18	19	20	21	22
Shoulder (in)	9	10	11	12	13
Sleeve Length (in)	6	6.5	7	7.5	8

SHIRT (FULL SLEEVE)

6TH - 12TH

MEASUREMENT GUIDELINES

FOR FULL SLEEVE SHIRT



TIPS

- Use a flexible measuring tape.
- Measure over light clothing.
- Stand straight and keep arms relaxed.



For best fit, compare your measurements with our size chart.

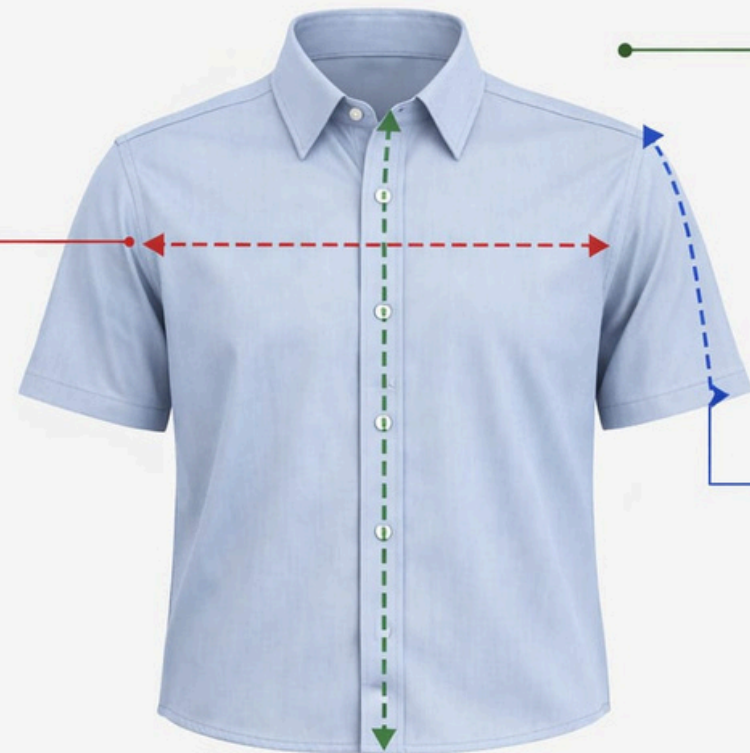
Chest Size (in)	28	30	32	34	36	38	40
Shirt Length (in)	22	23	24	25	26	27	28
Shoulder (in)	13	14	15	16	17	18	19
Sleeve Length (in)	20	21	22	23	24	25	26

SHIRT(HALF SLEEVE)

6TH - 12TH

MEASUREMENT GUIDELINES

FOR HALF SLEEVE SHIRT



1 CHEST SIZE

Measure across the fullest part of the chest from one armpit to the other.

2 SHIRT LENGTH

Measure from the top of the shoulder (near the collar) down to the bottom of the shirt.

3 SLEEVE LENGTH

Measure from the shoulder seam to the end of the sleeve.

TIPS

- Use a flexible measuring tape.
- Measure over light clothing.
- Stand straight and keep arms relaxed.



For best fit, compare your measurements with our size chart.

Chest Size (in)	28	30	32	34	36	38	40
Shirt Length (in)	22	23	24	25	26	27	28
Shoulder (in)	13	14	15	16	17	18	19
Sleeve Length (in)	8	8.5	9	9.5	10	10.5	11

GIRLS SHIRT (HALF SLEEVE)

MEASUREMENT GUIDELINES

FOR GIRLS' HALF SLEEVE SHIRT

1 CHEST SIZE
Measure across the fullest part of the chest from one armpit to the other.



2 SHIRT LENGTH
Measure from the top of the shoulder (near the collar) down to the bottom of the shirt.

3 SLEEVE LENGTH
Measure from the shoulder seam to the end of the sleeve.

- TIPS**
- Use a flexible measuring tape.
 - Measure over light clothing.
 - Stand straight and keep arms relaxed.



For best fit, compare your measurements with our size chart.

Chest Size (in)	20	22	24	26	28	30	32	34	36	38	40
Shirt Length (in)	17	18	19	20	21	22	23	24	25	26	27
Shoulder (in)	8.5	9.5	10.5	11.5	12.5	13.5	14.5	15.5	16.5	17.5	18.5
Sleeve Length (in)	5.5	6	6.5	7	7.5	8	8.5	9	9.5	10	10.5

GIRLS SHIRT (FULL SLEEVE)

MEASUREMENT GUIDELINES

FOR GIRLS' FULL SLEEVE SHIRT

1 CHEST SIZE

Measure across the fullest part of the chest from one armpit to the other.



2 SHIRT LENGTH

Measure from the top of the shoulder (near the collar) down to the bottom of the shirt.

3 SLEEVE LENGTH

Measure from the shoulder seam to the end of the sleeve.

TIPS

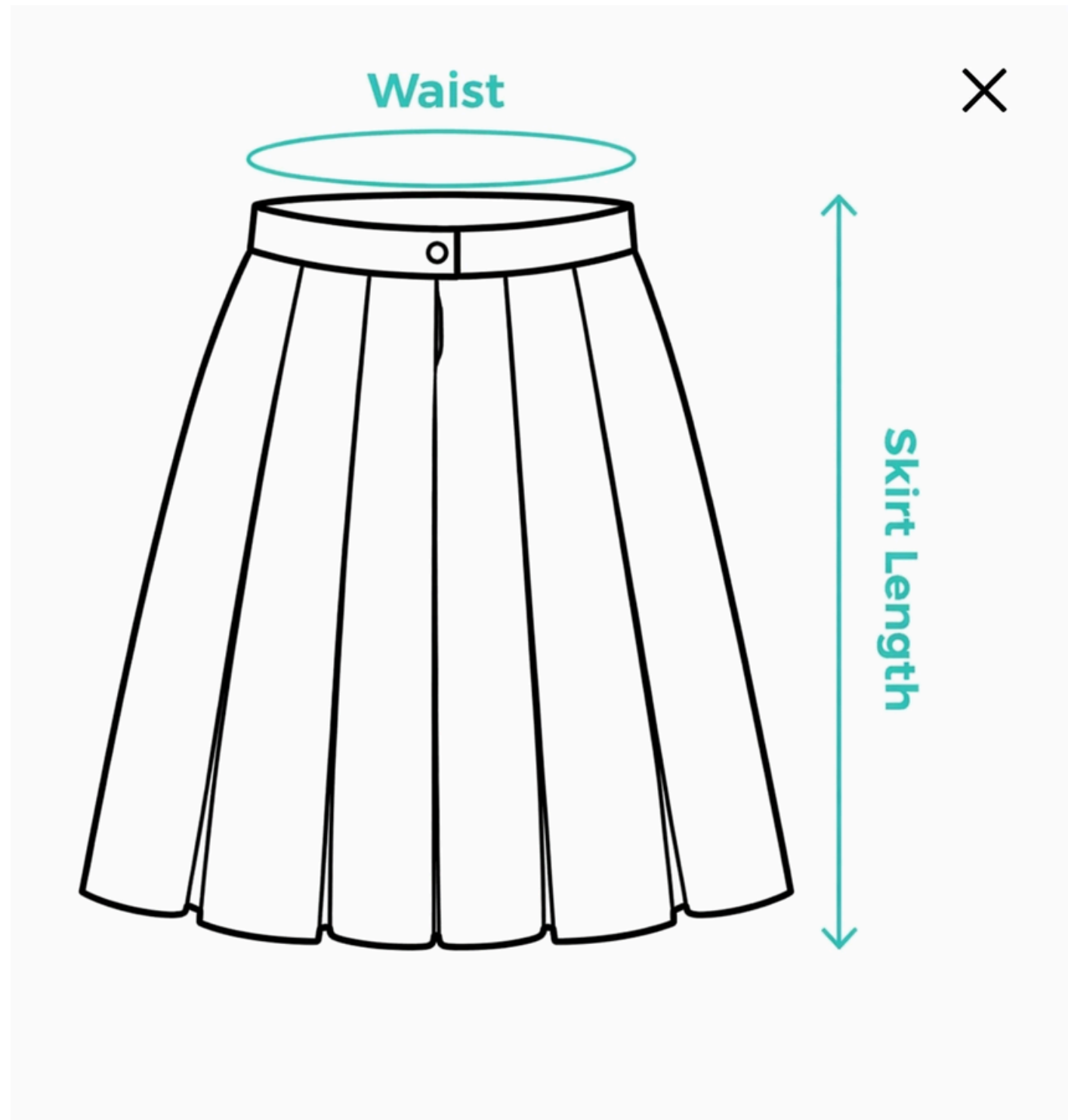
- Use a flexible measuring tape.
- Measure over light clothing.
- Stand straight and keep arms relaxed.



For best fit, compare your measurements with our size chart.

Chest Size (in)	20	22	24	26	28	30	32	34	36	38	40
Shirt Length (in)	17	18	19	20	21	22	23	24	25	26	27
Shoulder (in)	8.5	9.5	10.5	11.5	12.5	13.5	14.5	15.5	16.5	17.5	18.5
Sleeve Length (in)	15	16	17	18	19	20	21	22	23	24	25

GIRLS SKIRT



Waist Size (in)	20	22	24	26	28	30	32	34
Skirt Length (in)	14	15	16	17	18	19	20	21